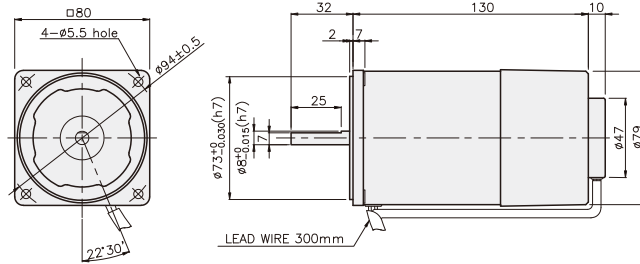


SPEED CONTROL & BRAKE MOTOR

25W

□80mm

K8RS25N□-D



SPECIFICATIONS

25W 30분 정격, 4극

Model	Voltage (V)	Frequency (Hz)	Speed Range (rpm)	Permissible Torque		Start T. (N·m/kgf·cm)	Current (A)	Condenser (μF)	Friction T. (N·m/kgf·cm)
				1200 rpm (N·m/kgf·cm)	90 rpm (N·m/kgf·cm)				
K8R□25NJ-D	100	50	90 ~ 1400	0.22/2.2	0.06/0.6	0.105/1.05	0.85	10	0.4/4
		60	90 ~ 1700						
K8R□25NU-D	110	60	90 ~ 1700	0.22/2.2	0.06/0.6	0.1/1	0.7	6	0.4/4
	115						0.75		
K8R□25NL-D	200	50	90 ~ 1400	0.21/2.1	0.055/0.55	0.11/1.1	0.4	2.5	0.4/4
		60	90 ~ 1700	0.16/1.6	0.048/0.48		0.43		
K8R□25NC-D	220	50	90 ~ 1400	0.21/2.1	0.055/0.55	0.09/0.9	0.4	2	0.4/4
			60	90 ~ 1700	0.16/1.6				
		50	90 ~ 1400	0.21/2.1	0.055/0.55	0.1/1			
			60	90 ~ 1700	0.16/1.6				
K8R□25ND-D	240	50	90 ~ 1400	0.21/2.1	0.055/0.55	0.09/0.9	0.43	1.5	0.4/4

* □ : SHAFT 형상(S : STRAIGHT, G : PINION)

RATED TORQUE OF GEARHEAD

● 단상 100V/115V

단위 = 상단 : N·m / 하단 : kgf·cm

Model	Ratio	3	3.6	5	6	7.5	9	10	12.5	15	18	20	25	30	36	40	50	60	75	90	100	120	150	180	200	250
Motor/Gearhead	Speed(rpm)																									
K8R□25N□-D K8G□B(C)	1200	0.53 5.3	0.64 6.4	0.89 8.9	1.07 10.7	1.34 13.4	1.60 16.0	1.78 17.8	2.23 22.3	2.67 26.7	3.21 32.1	3.21 32.1	4.01 40.1	4.81 48.1	5.77 57.7	6.42 64.2	7.22 72.2	8 80	8 80	8 80	8 80	8 80	8 80	8 80	8 80	8 80
	90	0.15 1.5	0.17 1.7	0.24 2.4	0.29 2.9	0.36 3.6	0.44 4.4	0.49 4.9	0.61 6.1	0.73 7.3	0.87 8.7	0.87 8.7	1.09 10.9	1.31 13.1	1.57 15.7	1.75 17.5	1.97 19.7	2.36 23.6	2.95 29.5	3.54 35.4	3.94 39.4	4.72 47.2	5.90 59.0	7.09 70.9	8 80	8 80

● 단상 200V/240V

단위 = 상단 : N·m / 하단 : kgf·cm

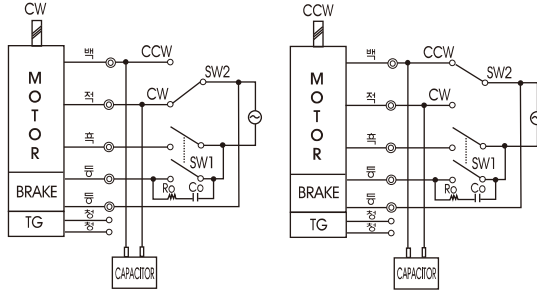
Model	Ratio	3	3.6	5	6	7.5	9	10	12.5	15	18	20	25	30	36	40	50	60	75	90	100	120	150	180	200	250
Motor/Gearhead	Speed(rpm)																									
K8R□25N□-D K8G□B(C)	1200	200V/220V/230V 240V/50Hz	0.51 5.1	0.61 6.1	0.85 8.5	1.02 10.2	1.28 12.8	1.53 15.3	1.70 17.0	2.13 21.3	2.55 25.5	3.06 30.6	3.06 30.6	3.83 38.3	4.59 45.9	5.51 55.1	6.12 61.2	6.89 68.9	8 80	8 80	8 80	8 80	8 80	8 80	8 80	8 80
		200V/220V 230V/60Hz	0.39 3.9	0.47 4.7	0.65 6.5	0.78 7.8	0.97 9.7	1.17 11.7	1.30 13.0	1.62 16.2	1.94 19.4	2.33 23.3	2.33 23.3	2.92 29.2	3.50 35.0	4.20 42.0	4.67 46.7	5.25 52.5	6.30 63.0	7.87 78.7	8 80	8 80	8 80	8 80	8 80	8 80
	90	200V/220V/230V 240V/50Hz	0.13 1.3	0.16 1.6	0.22 2.2	0.27 2.7	0.33 3.3	0.40 4.0	0.45 4.5	0.56 5.6	0.67 6.7	0.80 8.0	0.80 8.0	1.00 10.0	1.20 12.0	1.44 14.4	1.60 16.0	1.80 18.0	2.17 21.7	2.71 27.1	3.25 32.5	3.61 36.1	4.33 43.3	5.41 54.1	6.50 65.0	7.22 72.2
		200V/220V 230V/60Hz	0.12 1.2	0.14 1.4	0.19 1.9	0.23 2.3	0.29 2.9	0.35 3.5	0.39 3.9	0.49 4.9	0.58 5.8	0.70 7.0	0.70 7.0	0.87 8.7	1.05 10.5	1.26 12.6	1.40 14.0	1.57 15.7	1.89 18.9	2.36 23.6	2.83 28.3	3.15 31.5	3.78 37.8	4.72 47.2	5.67 56.7	6.30 63.0

- * GEARHEAD·DECIMAL GEARHEAD는 별매입니다.
- * GEARHEAD의 품명중 □에는 감속비가 들어갑니다.
- * ■ 색이 MOTOR와 같은 방향, 그 외에는 반대 방향입니다.
- * 표의 감속비보다 더 감속하고자 할 경우는 GEARHEAD와 MOTOR 사이에 감속비 10의 DECIMAL GEARHEAD를 설치할 수 있습니다. 이 경우의 허용 TORQUE는 8 N·m / 80 kgf·cm 입니다.
- * 회전수는 MOTOR의 동기 회전수 (50 Hz : 1500 rpm, 60 Hz : 1800 rpm)를 기준으로 하여 감속비로 나누어서 계산하였습니다. 실제의 회전수는 부하의 크기에 따라서 표시된 수치보다 2~20% 적습니다.

GEARHEAD

CONNECTION DIAGRAMS

접점 보호를 위해 결선도와 같이 서지(Surge) 전압 흡수용 Cr회로를 접속하여 주십시오.
 $R_o = 5 - 200\Omega$
 $C_o = 0.1 \sim 0.2\mu F \ 200WV(400WV)$



※ 회전방향은 출력축에서 볼경우

DIMENSIONS

K8G□B(C)

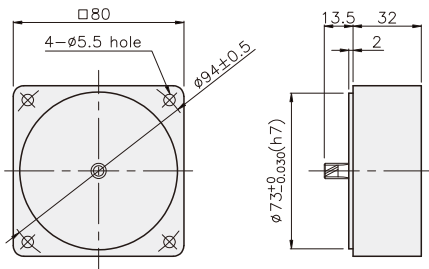


K8RG25N□-D + K8G□B(C)



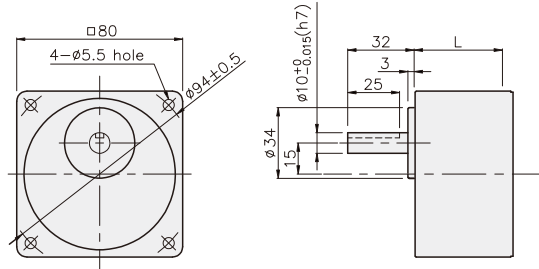
DECIMAL GEARHEAD

K8G10BX



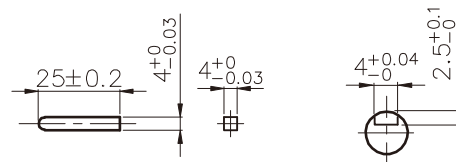
GEARHEAD

K8G□B(C)



KEY SPEC

- KEY
- KEY GROOVE



치수도표

품번	L	적용기종	취부 BOLT
01	32	K8G3~18B(C)	M5 P0.8 X 50
02	42.5	K8G20~250B(C)	M5 P0.8 X 65
03	32	K8G10BX	M5 P0.8 X 95

무게

PART	WEIGHT(kg)	
MOTOR	1.94	
DECIMAL GEARHEAD	0.46	
GEAR HEAD	K8G3~18B(C)	0.51
	K8G20~40B(C)	0.64
	K8G50~250B(C)	0.70

K8RG25N□-D + K8G□B(C)

